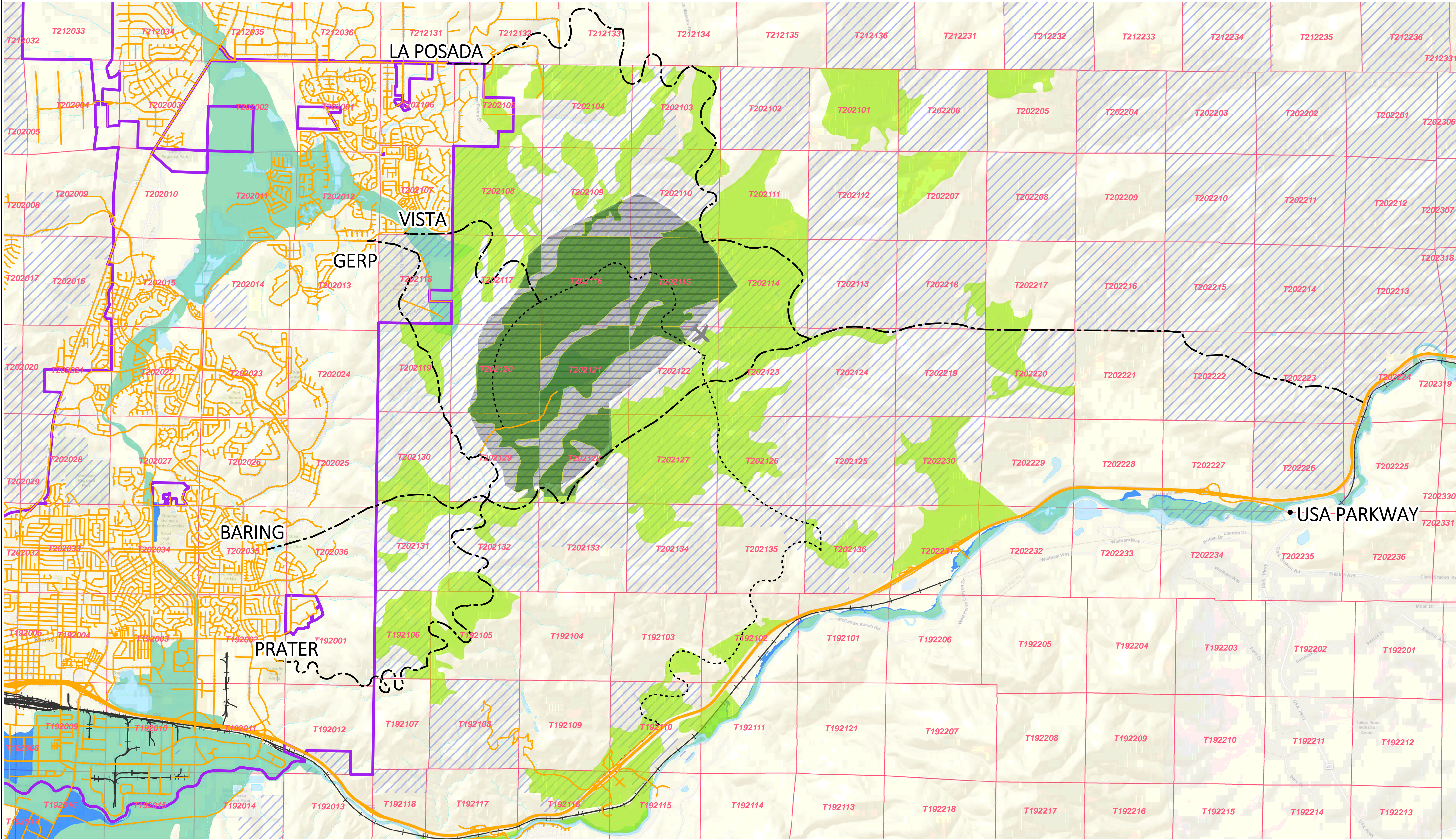


For reference purposes only. Stantec assumes no liability for the accuracy of the data contained hereon.

V:\1817\p\mof\2019\Sparks\_FSA\_Federal\_Lands\GIS\Development\_Suitability\_36x24L.mxd



**Legend**

Sparks City Limits	Fema Flood Zone	Developable (<30% slope)	United States of America	Township, Range, Section
Freeway	Zones A, AE, AO or AH	Inside ACEC - 2,500 acres	PahRah Petroglyphs ACEC	UPRR
Arterial/Collector/Local	Zone X (500-year)	Outside ACEC - 8,843 acres	Potential Roadway Connections	Potential Interior Roadways
Stream/River				

1 inch = 2,500 feet

PROJECTION: STATE PLANE NEVADA WEST ZONE, NAD 83, US SURVEY FOOT  
 Source: Washoe County Department of Community Services; August 2018 digital data release and Washoe Assessor parcel match; Stantec Consulting Services Inc.  
 DATE: 5/28/2019    DRAWN BY: CJA    PROJECT NO.: 181799000

**CITY OF SPARKS**  
**INTEREST IN FEDERAL LANDS**

**Development Suitability**